



Application

- Circulation and transfer of clean, chemically non-aggressive water and other liquids
- Water supply & irrigation
- Water circulation in air conditioning systems

Operating conditions

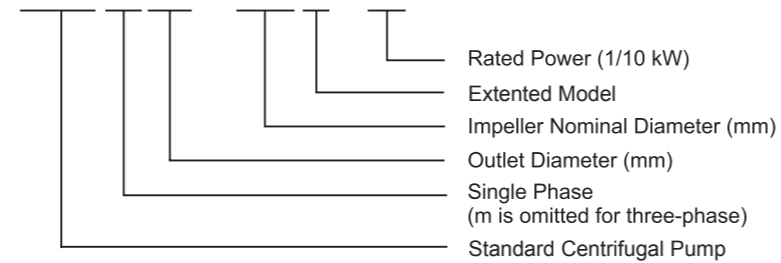
- Delivery: up to 220 m³/h
- Head: up to 95 m
- Liquid temperature:
 - Standard: -10°C to 85°C
- Maximum operating pressure: 12 bar (PN12)
 - Anti-clockwise rotation when facing pump's suction port
- Impeller: AISI304/HT200
- Mechanical seal in compliance with DIN 24960
- Lubricated by internal recirculating pumped liquid
- Counter flange available on request

Motor

- Closed construction, external ventilation
- Insulation class: F
- Protection class: IP54
- Performance in compliance with CEI 2-3 (IEC 34.1)
- Max. ambient temperature: +40°C
- Overload protection

Identification Codes

XST m 32 – 125 K / 11

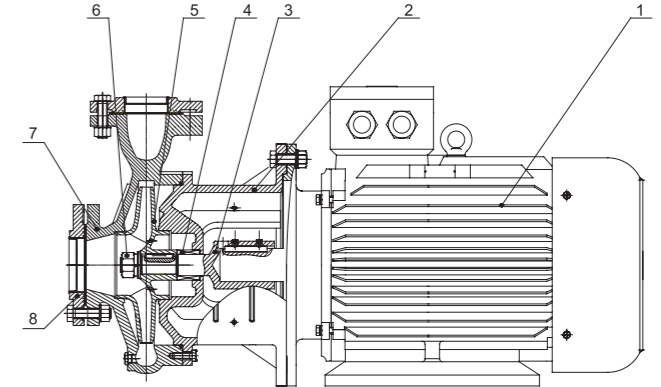


Accessories on Request

- Galvanised iron threaded counter flanges
- Flanged tapered coupling
- Pump and motor sealing gasket

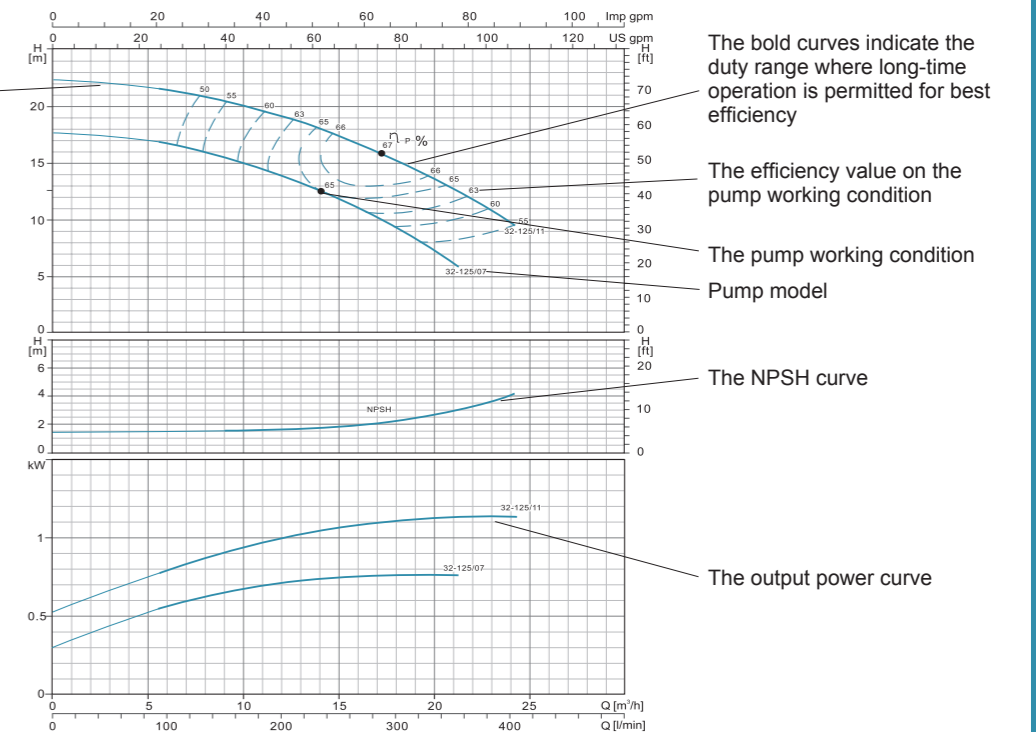
Materials Table

No.	Part	Material
1	Motor	
2	Support	HT 200
3	Pump shaft	Steel/AISI 304
4	Mechanical seal	Carbon/Silicon carbide
5	Impeller	HT 200/Stainless Steel
6	Nut	AISI 304
7	Pump body	HT 200
8	Flange	HT 200



How to Read The Curve Charts

The thin curves indicate the duty range where long-time operation is not allowed



Guidelines to Performance Curves

Tolerances to ISO 9906, Annex A. Measurements have been made with airless water at a temperature of 20°C and kinematic viscosity of 1mm²/s. To avoid overheating of the motor, the pump should not be used against a high head for a long time.

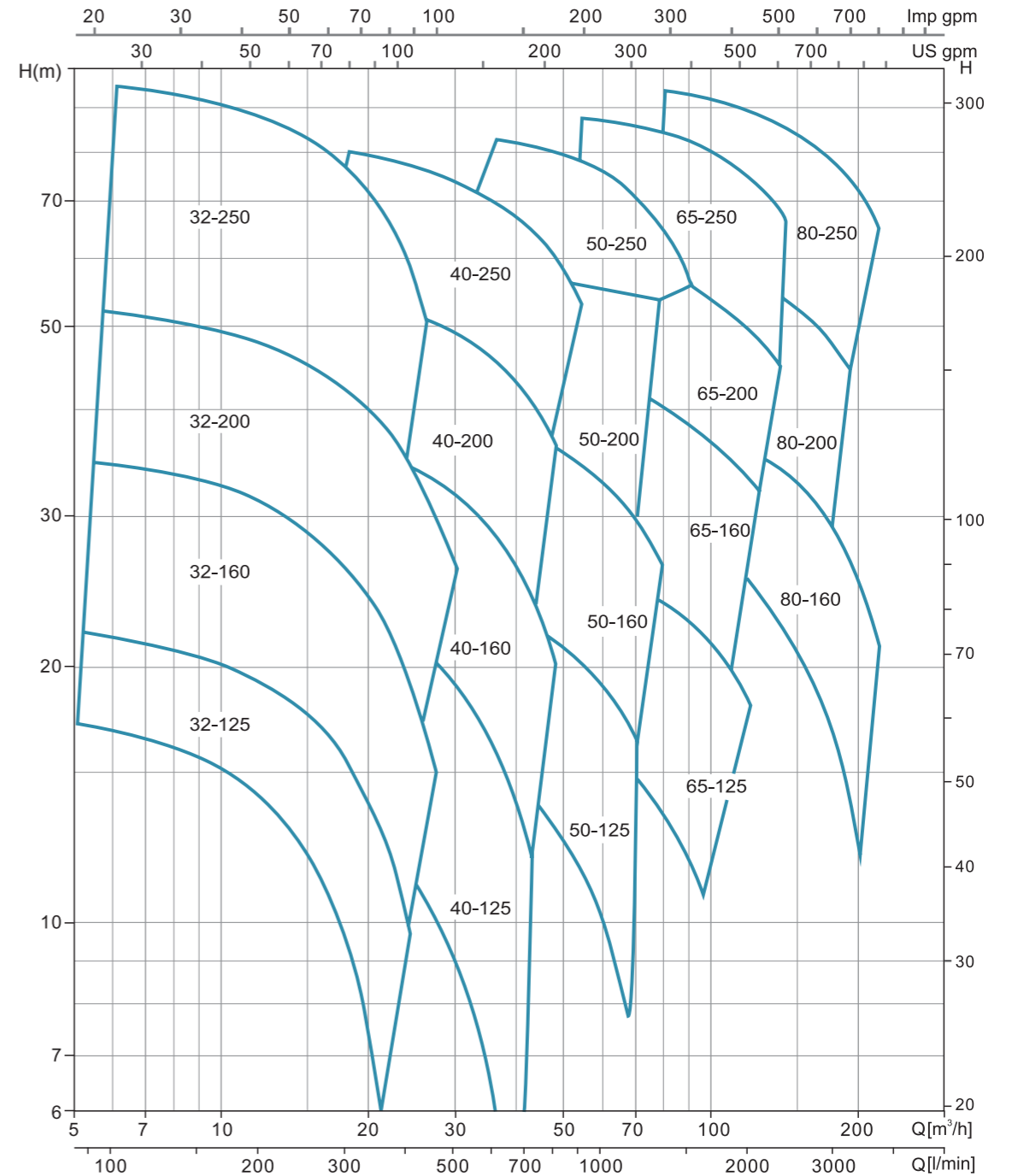
Technical Data

PUMP TYPE	POWER		l/min	Q=DELIVERY																			
	kW	HP		Q [m³/h]																			
				0	100	150	200	250	300	400	450	600	700	800	900	1200	1400	1500	1800	2000	2300	3000	3500
32-125/7*	0.75	1		17.5	16.7	15	12	9															
32-125/11*	1.1	1.5		22	21	20.2	17	15	9														
32-160/15*	1.5	2		24	23.7	22.5	19.5	16.2															
32-160/22*	2.2	3		31	29.6	29	25.5	22.5	15														
32-160/30*	3	4		34.5	33.5	33	29	26.5	20	16.5													
32-200/30*	3	4		43.2	42	40.5	35.2	32.2	24.6	19.8													
32-200/40*	4	5.5		52	50.5	50	45	41.9	35	30.3													
32-250/55*	5.5	7.5		79	74.7	71.8	63	56	37.5														
32-250/75*	7.5	10		95	92	89	82	75	57.8														
40-125/11	1.1	1.5		14.7				13	11.5	10.1													
40-125/15	1.5	2		18.1				17	15	13.9													
40-125/22	2.2	3		24.5				23.2	21.5	20.2	16	12											
40-160/30	3	4		31.8				29	27.5	26.3	21.5	17.5											
40-160/40	4	5.5		38				36	34	33	28.5	25	20.1										
40-200/55*	5.5	7.5		44				42	40	38	32	27											
40-200/75*	7.5	10		55				52	49	48	42	37	32										
40-250/92*	9.2	12.5		64				59	56.5	55	49.5	45	39.8										
40-250/110*	11	15		72				67.5	65	63.5	57.5	52.2	47										
40-250/150*	15	20		82				79	77.3	76.5	71	66	60.5										
50-125/22	2.2	3		17							15.4	14	12.8	11.5									
50-125/30	3	4		20							18.8	18	17	15.6									
50-125/40	4	5.5		24							23.1	22.6	21.5	20.3	15.8								
50-160/55	5.5	7.5		32							30.6	30	28	26.6	20.5								
50-160/75	7.5	10		40							38	37	36	34.4	29								
50-200/92*	9.2	12.5		50.5							46.8	45	43	40.9	32.5								
50-200/110*	11	15		57.5							53.5	52	50	47.5	40								
50-250/150*	15	20		68.5							64	63	61.5	59	50	41							
50-250/185*	18.5	25		77							73.2	72	70	68	60.5	51.5							
50-250/220*	22	30		86.3							83	81.5	80	78	70	61							
65-125/40	4	5.5		19								17.3	16.8	14.5	13	11.8							
65-125/55	5.5	7.5		23								21.3	20.9	19	17.5	16.7	13.7						
65-125/75	7.5	10		27								26	25.6	24.5	23	22.5	20	18					
65-160/92	9.2	12.5		33								31.5	30	28	27.1	24	21.5						
65-160/110	11	15		36								34.5	33	31.5	30.8	28	25.5						
65-160/150	15	20		42								41	40	38.5	37.8	35	33						
65-200/150	15	20		45.5								46	43.5	41	39.2	33							
65-200/185	18.5	25		53								53.5	51.2	48.3	47	41.5							
65-200/220	22	30		59								59.5	57.2	54	53	47	43.5						
65-200K/185	18.5	25		41.2									42	41.2	40.6	38.2	36.5	34					
65-200K/220	22	30		48										48	47.5	46	44	41					
65-200K/300	30	40		59.5										59	58.5	58	56.2	54					
65-250/220	22	30		62									61.5	58.2	56.5	54	49	45					
65-250/300	30	40		76									75	73	70	69	64	61	54				
65-250/370	37	50		90									88	86	84	82	78	74	68				
80-160/110	11	15		27											27.3	26	24.5	22.5	16				
80-160/150	15	20		32.8											32.5	31.3	30.2	28	22.1	16.7			
80-160/185	18.5	25		39											38	36.8	35.7	33.8	28.8	23.5			
80-200/220	22	30		48											47.5	46	43.5	41	32.5				
80-200/300	30	40		60											59.5	58	57	54.5	47				
80-250/370	37	50		71.5											70.5	67.5	65.5	61.5	49.5	38			
80-250/450	45	60		82											80.5	78.5	76.5	72	62	51			
80-250/550	55	75		95											93.5	91.2	89.8	86.8	77.6	68.3			

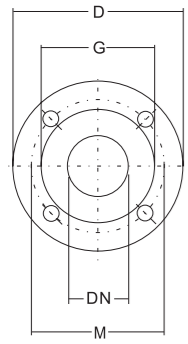
*=Stainless steel impeller

Characteristic Curves

XST	~2900rpm	ISO 9906 Annex A
-----	----------	------------------

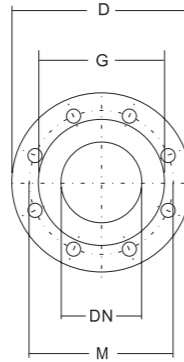


Flange Dimensions



PN16 FLANGES

DN	D	M	G	HOLES N°	∅	MAX. THICKNESS
32	140	100	78	4	18	18
40	150	110	88	4	18	18
50	165	125	102	4	18	20
65	185	145	122	4	18	20

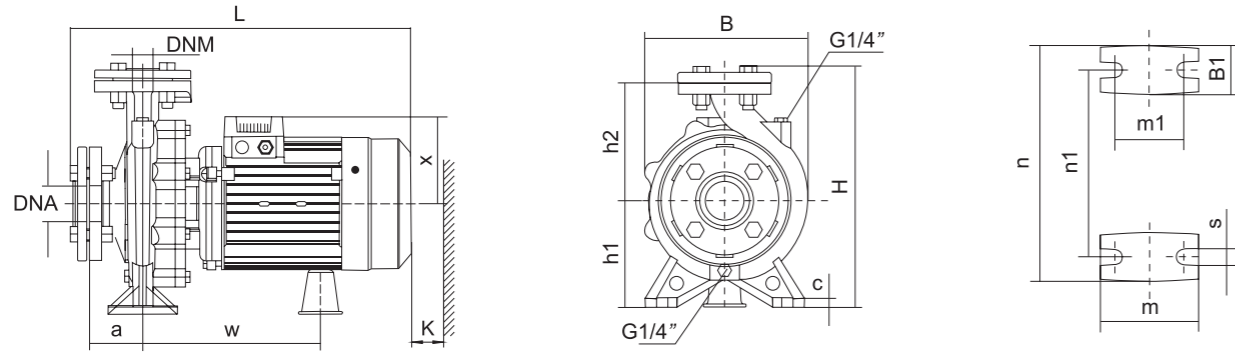


PN16 FLANGES

DN	D	M	G	HOLES N°	∅	MAX. THICKNESS
80	200	160	138	8	18	22
100	220	180	158	8	18	22

Installation Sketch

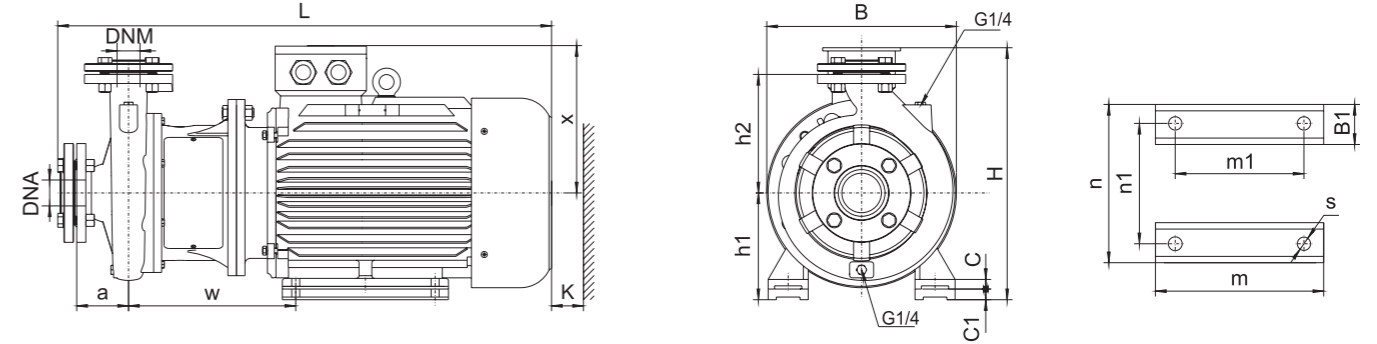
up to 7.5 kW included



MODEL	DNM	DNA	a	w	x	h2	B1	c	h1	m	m1	n	n1	s	B	H	L	K									
32-125/7	32	50	80	223	113	140	48	12	112	100	70	190	140	15	192	281	427	85									
32-125/11				231	123	160	50	16	132																		
32-160/15				266	141	180	52	16	132																		
32-160/22				266	141	180	52	16	132																		
32-160/30			266	141	180	52	16	132	95																		
32-200/30			258	127	180	48	12	160	95																		
32-200/40			258	127	180	48	12	160	95																		
32-250/55			155	264	180	198	60	15	160	60																	
32-250/75			155	264	180	198	60	15	160	60																	
40-125/11			40	65	80	255	127	140	45	12	112	100	70	210	160	15	218	282	489	95							
40-125/15	255	127																			140	45	12	112			
40-125/22	255	127																			140	45	12	112			
40-160/30	238	127																			168	48	12	132	105		
40-160/40	238	127				168	48	12	132	105																	
40-200/55	100	259				180	180	50	160	105																	
40-200/75	100	259				180	180	50	160	105																	
50-125/22	50	65				100	262	127	160	50	12	132	100	70	240	190	15	243	322	518	110						
50-125/30																						262	127	160	50	12	132
50-125/40																						262	127	160	50	12	132
50-160/55			262	180	180																	52	160	110			
50-160/75			262	180	180		52	160	110																		
65-125/40			65	80	100		265	180	180	68	14	160	125	95	280	212	15	283	372	564	120						
65-125/55																						283	372	564			
65-125/75																						283	372	564			
65-250/220																						283	372	564			
65-250/370																						283	372	564			

Installation Sketch

From 7.5 kW



MODEL	DNM	DNA	a	w	x	h2	B1	C	C1	h1	m	m1	n	n1	s	B	H	L	K																			
40-250/92	40	65	100	310	260	225	65	20	20	180	260	210	320	254	14.5	350	440	845	110																			
40-250/110																																						
40-250/150																																						
50-200/92	50	65	100	310	260	200	65	20	-	160	260	210	320	254	14.5	350	420	845	120																			
50-200/110																																						
50-250/150																																						
50-250/185																																						
50-250/220																																						
65-160/92																				65	80	100	310	260	200	65	20	-	160	260	210	320	254	14.5	350	420	845	125
65-160/110																																						
65-160/150																																						
65-200/150																																						
65-200/185																																						
65-200/220																																						
65-200K/185																																						
65-200K/220																																						
65-200K/300																																						
65-250/220																																						
65-250/300	80	100	125	310	260	225	65	20	-	160	260	210	320	254	14.5	350	420	870	130																			
65-250/370																																						
80-160/110																																						
80-160/150																																						
80-160/185																																						
80-200/220																																						
80-200/300																																						
80-250/370																																						
80-250/450																																						
80-250/550																																						