



Application

- Can be used to transfer clean or slightly dirty water or other liquids similar to water in physical and chemical properties
- Suitable to be immersed in water for lifting water from the well or the pool, and draining water from the basement

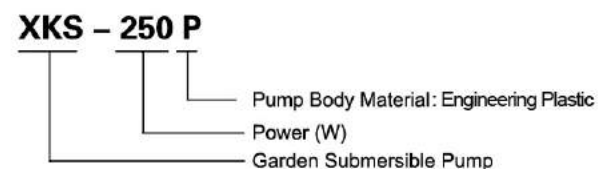
Pump

- Engineering plastic pump body
- Float switch ensures automatic cut-in and cut-out
- Max. liquid temperature: +35°C
- Max. immersion depth: 7 m
- Max. diameter of particle: 5 mm

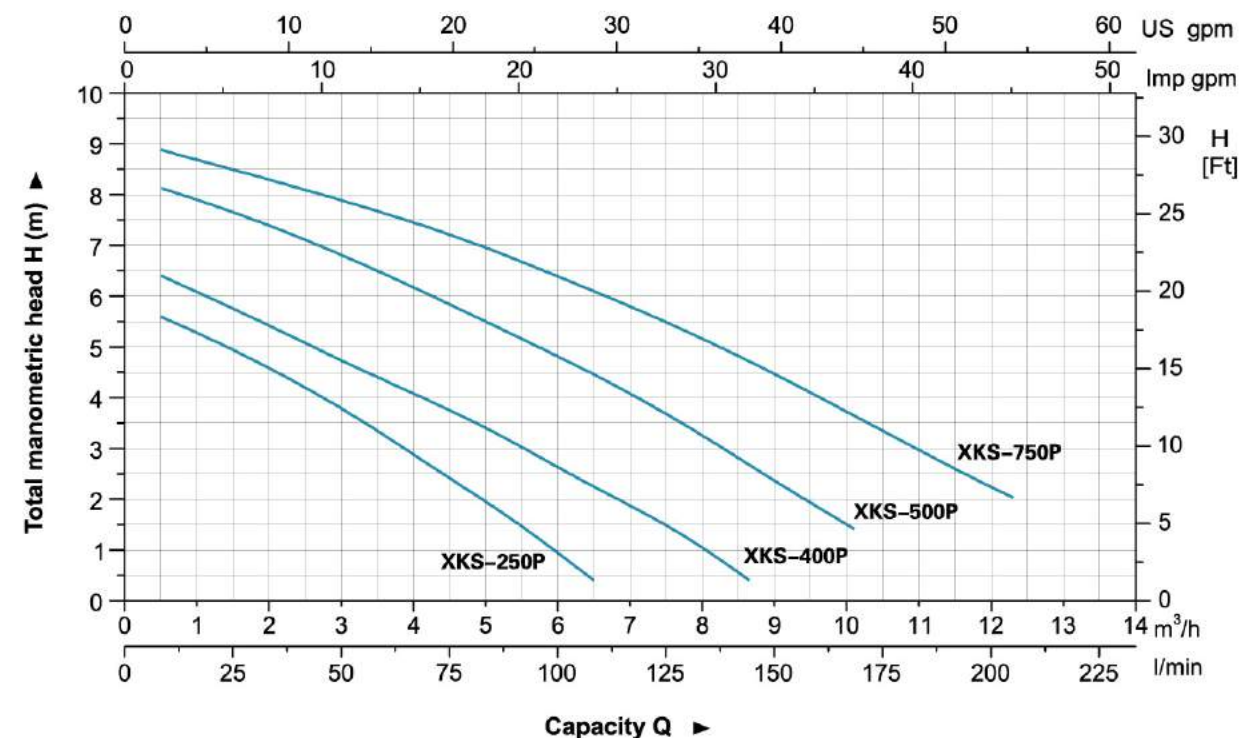
Motor

- Motor with aluminum winding
- Built-in thermal protector
- Insulation class: F
- Protection class: IPX8

Identification Codes

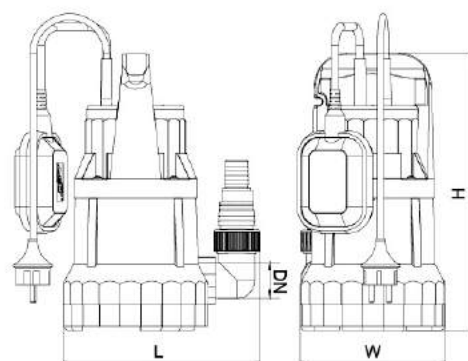


Hydraulic Performance Curves



Technical Data

MODEL	POWER		Q (m ³ /h)	0	1.5	3	4.5	6	7.5	9	10.5
	W	HP									
XKS-250P	250	0.3	H (m)	5.8	5	3.8	2.4	-	-	-	-
XKS-400P	400	0.5		6.5	5.8	4.7	3.7	2.6	1.5	-	-
XKS-500P	500	0.7		7.6	7.6	6.8	5.7	4.7	3.6	2.3	-
XKS-750P	750	1		8.7	8.5	7.7	7.2	6.2	5.5	4.5	3.2
				0	25	50	75	100	125	150	175

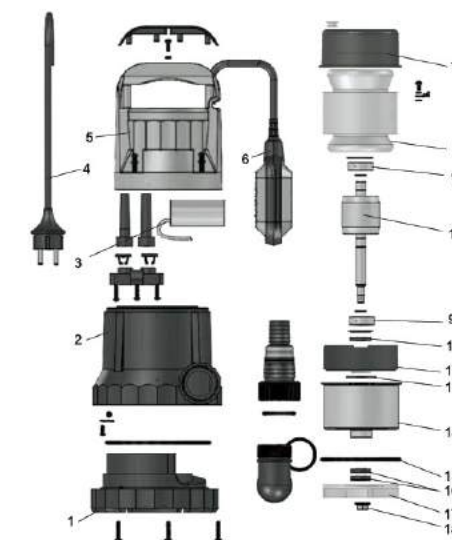


Dimension

Model	DN	L (mm)	W (mm)	H (mm)
XKS-250P	32	213	158	300.5
XKS-400P		213	158	300.5
XKS-500P		213	158	300.5
XKS-750P	40	213	158	317.5

Materials Table

Pos.	Part	Material
1	Pump base	PP
2	Pump body	PP
3	Capacitor	
4	Cable	
5	Roof	PP
6	Float switch	
7	Upper cover	
8	Stator	
9	Bearing	
10	Rotor	
11	Lip seal	
12	Bearing seat	DMC
13	O-ring	NBR
14	Stator shield	Steel
15	O-ring	NBR
16	Lip seal	
17	Impeller	PA6
18	Nut	AISI 304



Package Information

Model	GW (Kgs)	L (mm)	W (mm)	H (mm)	Quantity (PCS/20 TEU)
XKS-250P	4.8	210	160	340	2064
XKS-400P	5.1	210	160	330	2064
XKS-500P	5.5	210	160	340	2064
XKS-750P	6.0	210	160	340	2064





Application

- Can be used to transfer clean or slightly dirty water or other liquids similar to water in physical and chemical properties
- Suitable to be immersed in water for lifting water from the well or the pool, and draining water from the basement

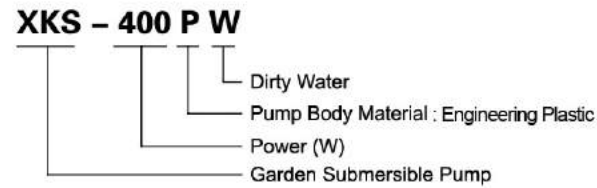
Pump

- Engineering plastic pump body
- Max. liquid temperature: +35°C
- Float switch ensures automatic cut-in and cut-out
- Max. immersion depth: 7 m
- Max. diameter of particle: 35 mm

Motor

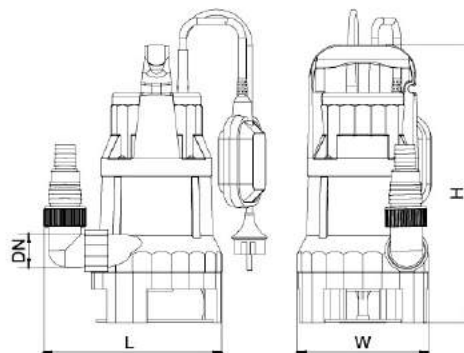
- Motor with aluminum winding
- Built-in thermal protector
- Insulation class: F
- Protection class: IPX8

Identification Codes



Technical Data

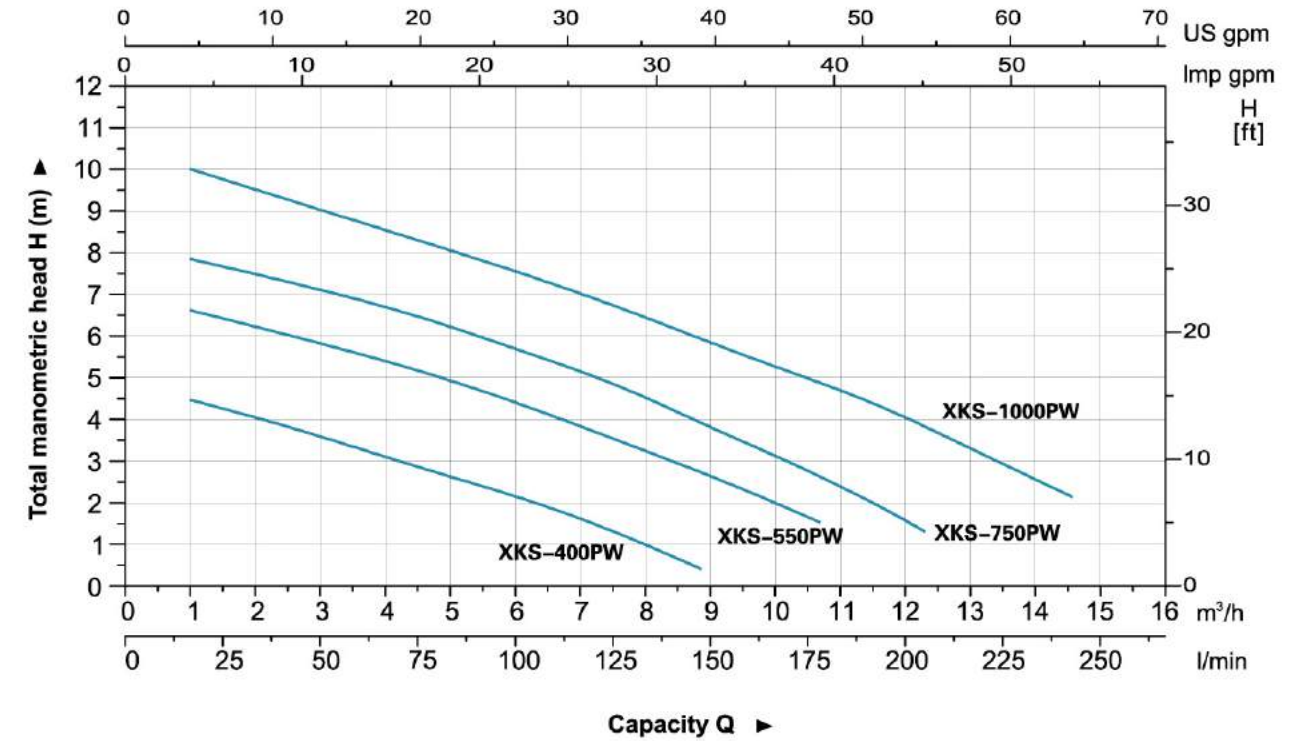
MODEL	POWER		Q (m³/h)	H (m)												
	W	HP		0	1.5	3	4.5	6	7.5	9	10.5	12	13.5			
XKS-400PW	400	0.5	4.8	4.3	3.5	2.8	2	1.3	-	-	-	-	-	-		
XKS-550PW	550	0.7	7	6.4	5.7	5.2	4.5	3.5	2.5	1.5	-	-	-	-		
XKS-750PW	750	1	8.2	7.5	7	6.5	5.8	4.8	3.8	2.8	1.5	-	-	-		
XKS-1000PW	1000	1.3	10.5	9.7	9	8.3	7.5	6.7	5.8	5	4	3	-	-		



Dimension

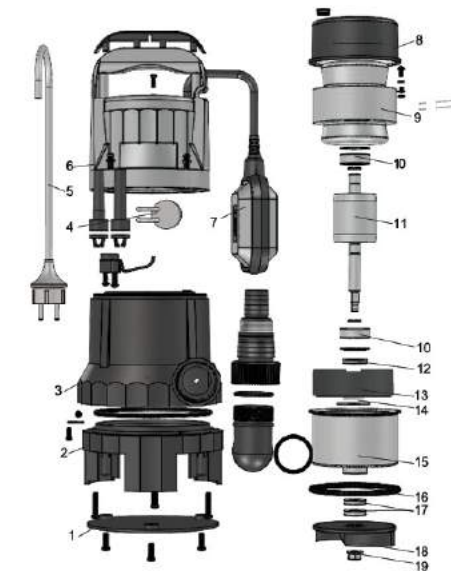
Model	DN	L (mm)	W (mm)	H (mm)
XKS-400PW	32	213	158	332
XKS-550PW	32	213	158	349
XKS-750PW	40	213	158	349
XKS-1000PW		217	153	376

Hydraulic Performance Curves



Materials Table

Pos.	Part	Material
1	Base plate	PP
2	Pump base	PP
3	Pump body	PP
4	Capacitor	
5	Cable	
6	Roof	PP
7	Float switch	
8	Upper cover	
9	Stator	
10	Bearing	
11	Rotor	
12	Lip seal	
13	Bearing seat	DMC
14	O-ring	NBR
15	Stator shield	Steel
16	O-ring	NBR
17	Lip seal	
18	Impeller	PA6
19	Nut	AISI 304



Package Information

Model	GW (Kgs)	L (mm)	W (mm)	H (mm)	Quantity (PCS/20 TEU)
XKS-400PW	4.8	200	150	300	2632
XKS-550PW	5.2	200	150	300	2632
XKS-750PW	6.2	200	150	300	2632
XKS-1000PW	7.8	205	155	345	2160

